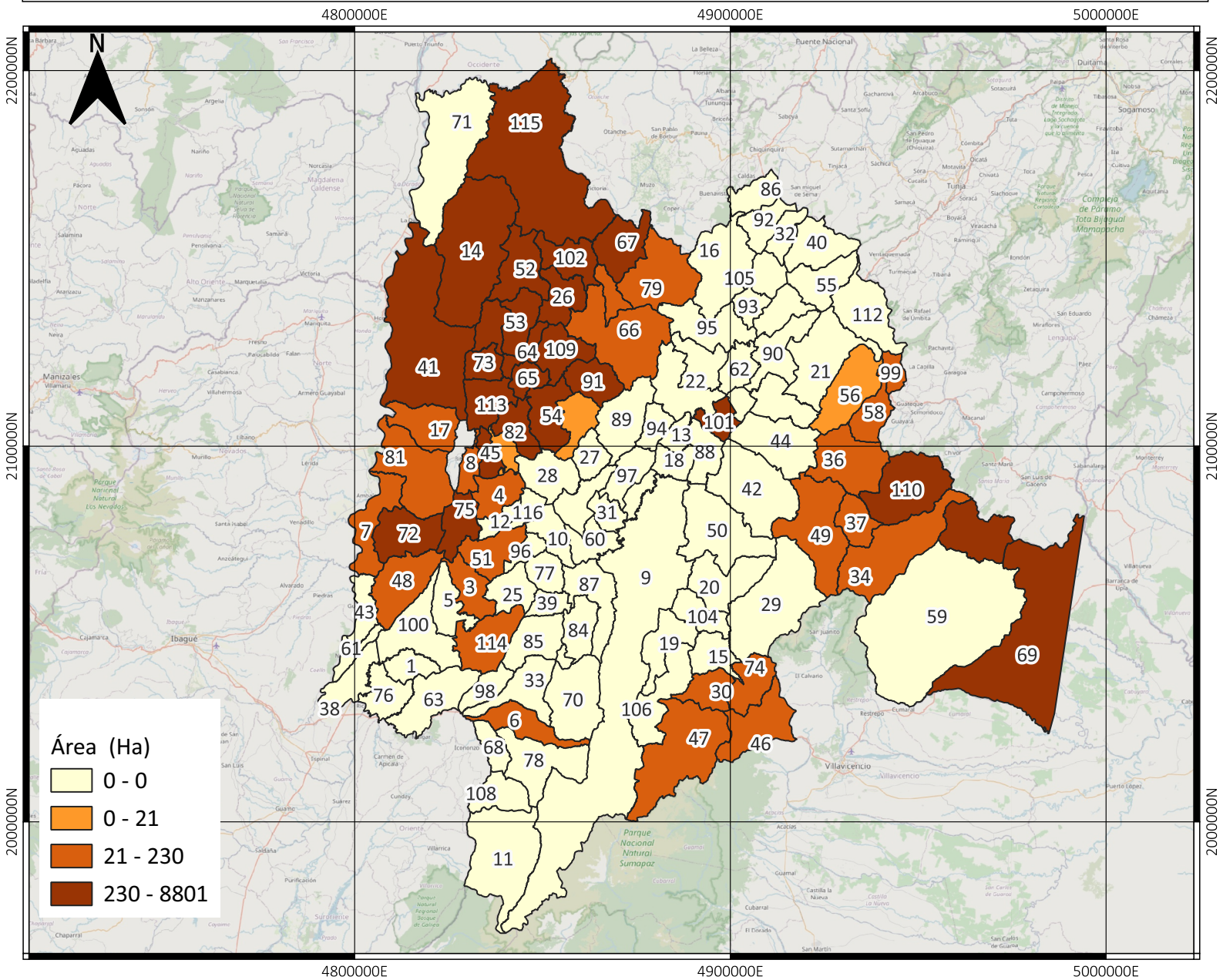


ÁREA COSECHADA DE CAÑA PANELERA EN CUNDINAMARCA - COLOMBIA (HECTÁREAS)

2023



| No | Municipio | No | Municipio | No | Municipio | No | Municipio |
|----|------------------|----|------------|----|---------------------|-----|----------------------------|
| 1 | Agua De Dios | 19 | Chipaque | 38 | Girardot | 57 | Madrid |
| 2 | Albán | 20 | Choachí | 39 | Granada | 58 | Manta |
| 3 | Anapoima | 21 | Chocontá | 40 | Guachetá | 59 | Medina |
| 4 | Anolaima | 22 | Cogua | 41 | Guaduas | 60 | Mosquera |
| 5 | Apulo | 23 | Cota | 42 | Guasca | 61 | Nariño |
| 6 | Arbeláez | 24 | Cucunubá | 43 | Guataquí | 62 | Nemocón |
| 7 | Beltrán | 25 | El Colegio | 44 | Guatavita | 63 | Nilo |
| 8 | Bituima | 26 | El Peñón | 45 | Guayabal De Síquima | 64 | Nimaima |
| 9 | Bogotá, D.C. | 27 | El Rosal | 46 | Guayabetal | 65 | Nocaima |
| 10 | Bojacá | 28 | Facatativá | 47 | Gutiérrez | 66 | Pacho |
| 11 | Cabrera | 29 | Fómeque | 48 | Jerusalén | 67 | Paime |
| 12 | Cachipay | 30 | Fosca | 49 | Junín | 68 | Pandi |
| 13 | Cajicá | 31 | Funza | 50 | La Calera | 69 | Paratebueno |
| 14 | Caparrapí | 32 | Fúquene | 51 | La Mesa | 70 | Pasca |
| 15 | Cáqueza | 33 | Fusagasugá | 52 | La Palma | 71 | Puerto Salgar |
| 16 | Carmen De Carupa | 34 | Gachalá | 53 | La Peña | 72 | Pulí |
| 17 | Chaguaní | 35 | Gachancipá | 54 | La Vega | 73 | Quebradanegra |
| 18 | Chía | 36 | Gachetá | 55 | Lenguazaque | 74 | Quetame |
| | | 37 | Gama | 56 | Machetá | 75 | Quipile |
| | | | | | | 76 | Ricaurte |
| | | | | | | 77 | San Antonio Del Tequendama |
| | | | | | | 78 | San Bernardo |
| | | | | | | 79 | San Cayetano |
| | | | | | | 80 | San Francisco |
| | | | | | | 81 | San Juan De Rioseco |
| | | | | | | 82 | Sasaima |
| | | | | | | 83 | Sesquilé |
| | | | | | | 84 | Sibaté |
| | | | | | | 85 | Silvania |
| | | | | | | 86 | Simijaca |
| | | | | | | 87 | Soacha |
| | | | | | | 88 | Sopó |
| | | | | | | 89 | Subachoque |
| | | | | | | 90 | Suesca |
| | | | | | | 91 | Supatá |
| | | | | | | 92 | Susa |
| | | | | | | 93 | Sutatausa |
| | | | | | | 94 | Tabio |
| | | | | | | 95 | Tausa |
| | | | | | | 96 | Tena |
| | | | | | | 97 | Tenjo |
| | | | | | | 98 | Tibacuy |
| | | | | | | 99 | Tibirita |
| | | | | | | 100 | Tocaima |
| | | | | | | 101 | Tocancipá |
| | | | | | | 102 | Topaipí |
| | | | | | | 103 | Ubalá |
| | | | | | | 104 | Ubaque |
| | | | | | | 105 | Ubaté |
| | | | | | | 106 | Une |
| | | | | | | 107 | Útica |
| | | | | | | 108 | Venecia |
| | | | | | | 109 | Vergara |
| | | | | | | 110 | Ubalá |

INFORMACIÓN DE REFERENCIA:
 Sistema coordinado: MAGNA SIRAS CTM12
 ESRI: 103599
 Datum: MAGNA

