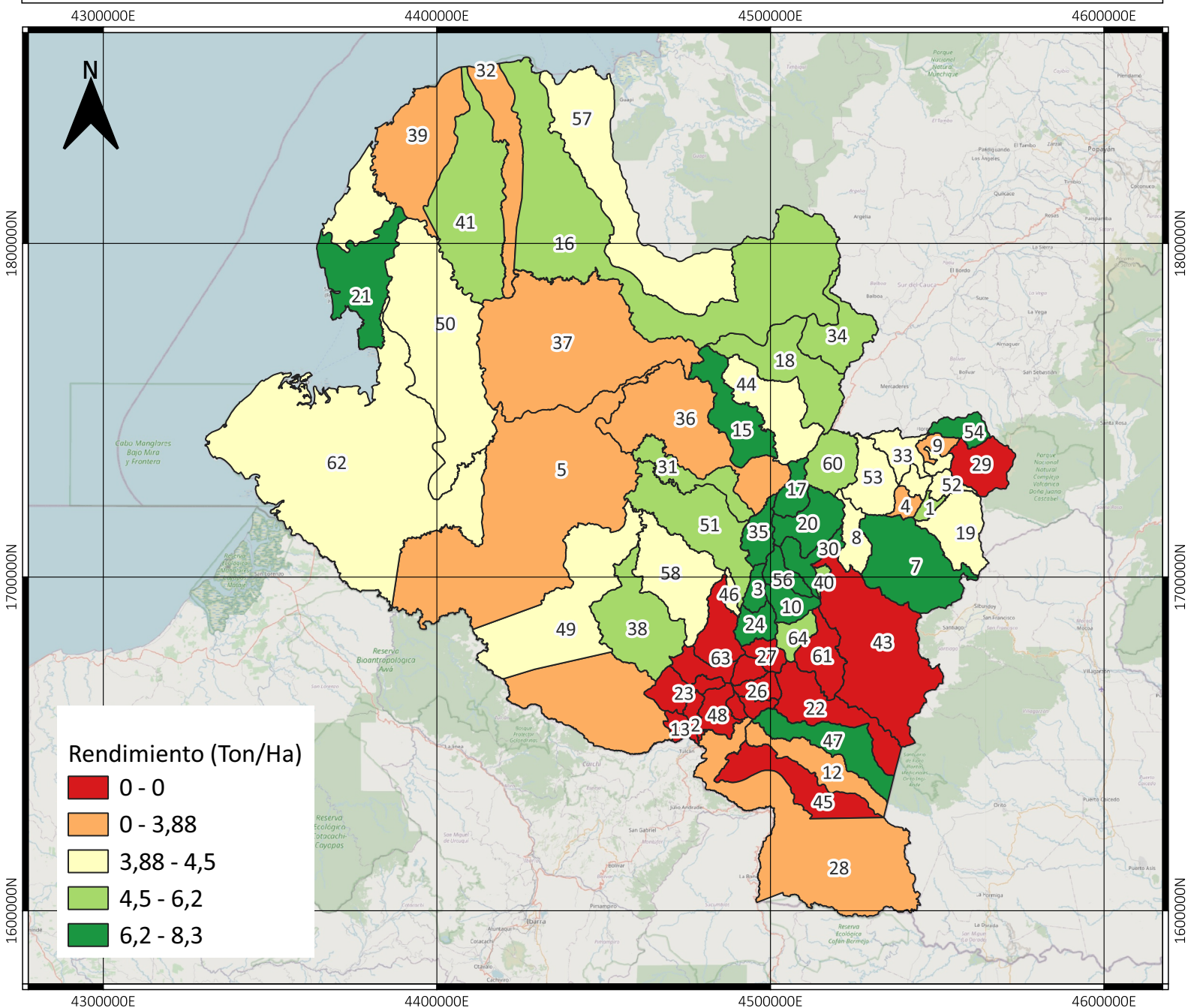


RENDIMIENTO DE PANELA NARIÑO - COLOMBIA (TONELADAS/HECTÁREAS) 2023



| No | Municipio | Yield (Ton/Ha) | No | Municipio | Yield (Ton/Ha) | No | Municipio | Yield (Ton/Ha) |
|----|-----------|----------------|----|-------------------|----------------|----|----------------------|----------------|
| 1 | Albán | 4.5 - 6.2 | 13 | Cuaspud | 0 - 3.88 | 26 | Iles | 0 - 3.88 |
| 2 | Aldana | 0 - 3.88 | 14 | Cumbal | 0 - 3.88 | 27 | Imués | 0 - 3.88 |
| 3 | Ancuya | 0 - 3.88 | 15 | Cumbitara | 0 - 3.88 | 28 | Ipiales | 0 - 3.88 |
| 4 | Arboleda | 0 - 3.88 | 16 | El Charco | 0 - 3.88 | 29 | La Cruz | 0 - 3.88 |
| 5 | Barbacoas | 0 - 3.88 | 17 | El Peñol | 0 - 3.88 | 30 | La Florida | 0 - 3.88 |
| 6 | Belén | 0 - 3.88 | 18 | El Rosario | 0 - 3.88 | 31 | La Llanada | 0 - 3.88 |
| 7 | Buesaco | 0 - 3.88 | 19 | El Tablón | 0 - 3.88 | 32 | La Tola | 0 - 3.88 |
| 8 | Chachagüí | 0 - 3.88 | 20 | El Tambo | 0 - 3.88 | 33 | La Unión | 0 - 3.88 |
| 9 | Colón | 0 - 3.88 | 21 | Francisco Pizarro | 6.2 - 8.3 | 34 | Leiva | 0 - 3.88 |
| 10 | Consacá | 0 - 3.88 | 22 | Funes | 0 - 3.88 | 35 | Linares | 0 - 3.88 |
| 11 | Contadero | 0 - 3.88 | 23 | Guachucal | 0 - 3.88 | 36 | Los Andes | 0 - 3.88 |
| 12 | Córdoba | 0 - 3.88 | 24 | Guaitarilla | 0 - 3.88 | 37 | Magüí | 0 - 3.88 |
| | | | 25 | Gualmatán | 0 - 3.88 | 38 | Mallama | 0 - 3.88 |
| | | | | | | 39 | Mosquera | 0 - 3.88 |
| | | | | | | 40 | Nariño | 0 - 3.88 |
| | | | | | | 41 | Olaya Herrera | 0 - 3.88 |
| | | | | | | 42 | Ospina | 0 - 3.88 |
| | | | | | | 43 | Pasto | 0 - 3.88 |
| | | | | | | 44 | Policarpa | 0 - 3.88 |
| | | | | | | 45 | Potosí | 0 - 3.88 |
| | | | | | | 46 | Providencia | 0 - 3.88 |
| | | | | | | 47 | Puerres | 0 - 3.88 |
| | | | | | | 48 | Pupiales | 0 - 3.88 |
| | | | | | | 49 | Ricaurte | 0 - 3.88 |
| | | | | | | 50 | Roberto Payán | 0 - 3.88 |
| | | | | | | 51 | Samaniego | 0 - 3.88 |
| | | | | | | 52 | San Bernardo | 0 - 3.88 |
| | | | | | | 53 | San Lorenzo | 0 - 3.88 |
| | | | | | | 54 | San Pablo | 0 - 3.88 |
| | | | | | | 55 | San Pedro De Cartago | 0 - 3.88 |
| | | | | | | 56 | Sandoná | 0 - 3.88 |
| | | | | | | 57 | Santa Bárbara | 0 - 3.88 |
| | | | | | | 58 | Santa Cruz | 0 - 3.88 |
| | | | | | | 59 | Sapuyes | 0 - 3.88 |
| | | | | | | 60 | Taminango | 0 - 3.88 |
| | | | | | | 61 | Tangua | 0 - 3.88 |
| | | | | | | 62 | Tumaco | 0 - 3.88 |
| | | | | | | 63 | Túquerres | 0 - 3.88 |
| | | | | | | 64 | Yacuanquer | 0 - 3.88 |

INFORMACIÓN DE REFERENCIA:
 Sistema coordinado: MAGNA SIRAS CTM12
 ESRI: 103599
 Datum: MAGNA